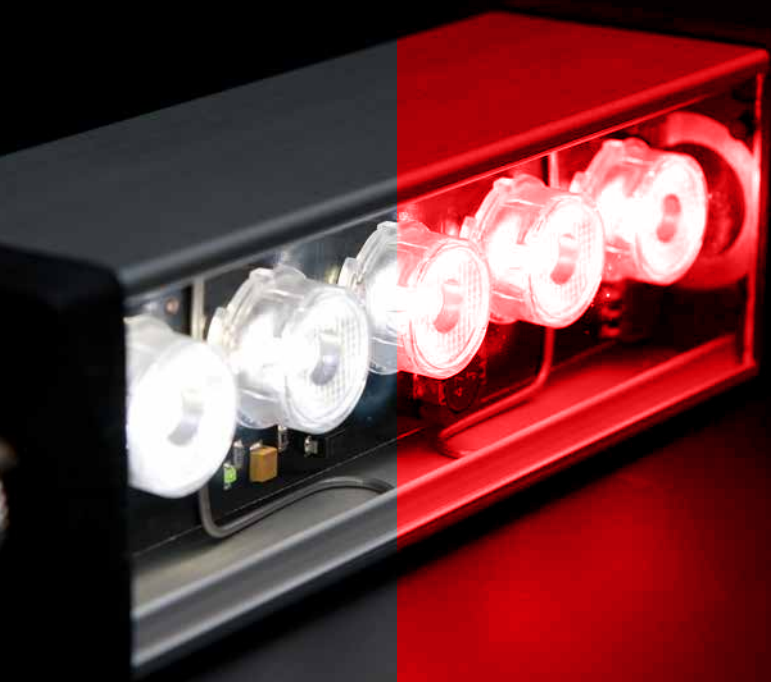


TPL
VISION
Active LEDs solutions

Lightings - **2013-2014** Collection



TPL Vision philosophy_

TPL Vision develops and manufactures High Power Led lighting solutions for machine vision applications.

As an involved expert, TPL Vision offers a consultancy and feasibility service for each project you may have.

Quality, know-how and availability are the company's key principles. TPL Vision is a pioneer especially in the miniaturization of power Led lights. TPL Vision products are designed to meet the most demanding industry standards.

*They trust us all over Europe:
Renault, Michelin, Valeo, Bosch, Bondulle, Alcan Packaging, Sanofi Aventis, etc.
TPL Vision handles more than 1,000 vision applications per year !*

The 360° vision, a custom-made solution: Expertise, reflection, advice, design and manufacturing : our teams offer trials & material loans to you and support you with your lighting projects.

TPL vision offers Plug&Light solutions, compatible with most industrial standards, easy to set up, or still customized products according to your specifications and realize technical trainings to your teams.











Leds, great value-added lighting !

- Power and homogeneity of light
- From infrared to ultraviolet, all the light spectrum nuances.
- Low power and optimized consumption
- Longest lifetime by using Leds from leading brands,
- Easy integration.

Legend

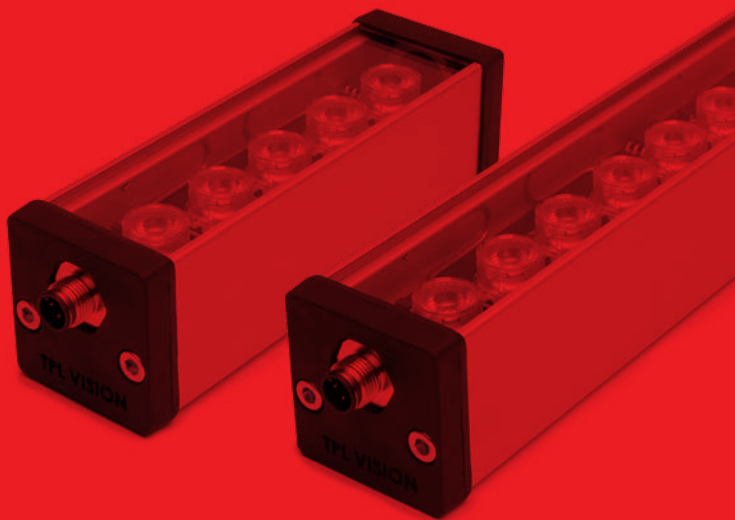
TPL VISION LED COLOURS

 white WHI	 infrared 850
 red 630	 ultraviolet 365
 green 525	 ultraviolet 385
 blue 470	 ultraviolet 405

PLUG & LIGHT LABEL



All TPL Vision's products labelled **Plug & Light** respect some criteria that simplify both the setting and the use.



FOCUS
POWERFUL
& EASY TO USE
ESSENTIAL EBAR.



Essential EBAR

Sizes: from 15 cm to 1m30

The Essential EBAR is a highly powerful Led lighting, very easy to set up, what makes it the fundamental bar for industrial vision. You don't have to adjust anything, only to plug. There are 2 functioning modes : continuous and strobe. Simplicity leading to power.

COLOURS:



Find out more

- M12 connector
- colourless anodized aluminum solid body
- lenses choice
- diffusers choice

BAR LIGHT

DIRECT OR DIFFUSE



Diffuse & Backlight BLBAR

Sizes: from 15 cm to 1m30

The Diffuse & Backlight BLBAR provides a powerful and homogenous lighting, so as to get a perfect diffusion, with no led lighting's points of impact. This linear backlight can be an alternative to fluorescent lighting. It offers a better average life, colours variety, stability and power. You can notably use it as a very diffusing direct lighting.

COLOURS:



Classic XBAR

Sizes: from 15 cm to 1m30

Historically, the Classic XBAR, direct powerful lighting, is a proven solution, renowned among industrial vision professionals. You can choose between many settings : lighting intensity, functioning mode (continuous or strobe), and compatible with standards.

COLOURS:



405



Lite LBAR

Sizes: from 30 cm to 1m 10

The Lite LBAR is a direct lighting bar, with a reduced number of Leds. However, there is no lack of power since it can enlighten wide spaces. Its quality, the same as any other TPL Vision's product, and its satisfactory lighting power make it an affordable long-lasting linear lighting.

COLOURS:



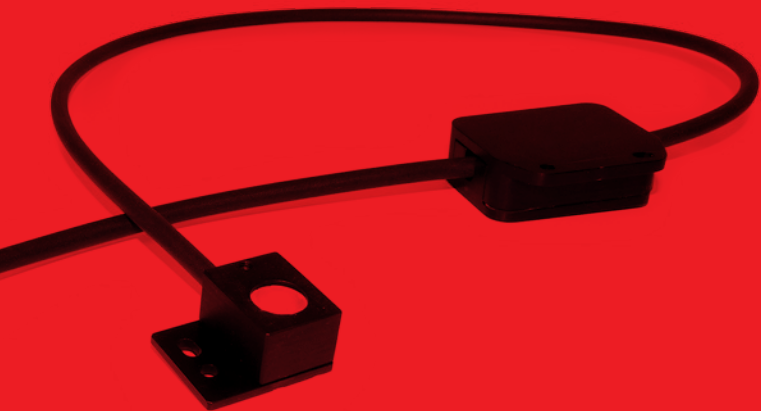
Waterproof Lite WLBAR

Sizes: from 15 cm to 1m 30

Specially created to fulfill the food industry's requirements, made of 304L stainless steel. Its solid body, pickled and passivated, can easily withstand the cleaning foams. Its mechanic has been designed for a safe use in aggressive environment (streaming, humidity...), with a IP 67 waterproof guarantee.

COLOURS:





FOCUS :
MAXI POWER
MINI SIZE,
THE THIN TSPOT.



Thin TSPOT1

Powerful, compact & autonomous

The Thin TSPOT 1 is a very powerful compact spot. Equipped with its own power supply with current control, it can be easily set up. Its powerful led, in directive intense or diffuse lighting, enables controls in confined spaces. It can be submitted to very high production rates. Everything in the TSPOT 1 has been studied for a simple and efficient use.

COLOURS:



Find out more

- M12 connector
- black anodized aluminum solid body
- strobe & continuous modes
- very compact



Thin TSPOT4

Powerful, compact & autonomous

The Thin TSPOT 4, your camera's best partner to get an optimized control, has the same properties as the TSPOT 1. Equipped with 4 leds, it is highly powerful. Moreover, the fixing stirrup helps to orientate the lighting, in direct or darkfield ways. This spot is really appropriate wherever space is a real constraint.

COLOURS:



Find out more

- M12 connector
- black anodized aluminum solid body
- strobe & continuous modes
- compact

SPOT LIGHT

UP TO 4 LEDS



Thinled 1

Miniature spot

The ThinLED 1 is a miniature spot that provides an incredible lighting, considering its size. Its global shape enables an easy set up. The ThinLED 1 is particularly recommended for controls in small spaces. It can be seriously considered as a competitive alternative to lighting fibre optic: its high powerful led fits the highest production rates.

COLOURS:



Thinled 4

Miniature spot

The ThinLED 4 is a such a powerful lighting compact spot that it can be seriously considered as a competitive alternative to lighting fibre optic. It offers the same advantages as the ThinLED 1 with more power. The ThinLED 4 is equipped with a fixing stirrup, that makes it easy to fix and orientate, either for a direct or a darkfield lighting.

COLOURS:





Spot SBAR

Bar format spot

Equipped with a powerful led, the Spot SBAR has a bar format and can be easily fixed, thanks to the groove behind. You can choose lenses and diffuser to reach the adequate lighting for your application. The inside electronics make it very easy to use: plug it on a 24V power supply.

COLOURS:



405



Spot SBAR UV 365 & 385

Bar format UV spot

The Spot SBAR UV 365 (or UV 385) is equipped with a high powerful UV led, which is ideal to highlight any kind of product that reacts with UV light (glue, paint...). Thanks to the groove located behind, just like a bar, you can easily fix it, including in confined spaces.

COLOURS:



365

385



RING LIGHT



new product

Thin TRING

Compact & autonomous ring

The Thin TRING is a ring made up of 9 high powerful leds, for the diffuse lighting of circular areas, in continuous or strobe mode. Very compact, it perfectly suits confined spaces. Matching the Plug&Light criteria, the Thin TRING can be set up easily.

COLOURS:



Find out more

- current control power supply on cable
- M12 connector



Tiny'z AD

Tiny ring light

The Tiny'Z AD is a miniature ring equipped with 12 high powerful leds. Ideal partner of your camera, whatever the tasks it has to deal with: The Tiny'Z AD is particularly dedicated to the surface default checking, marking reading and presence/absence control.

COLOURS:



Find out more

- very compact
- continuous or strobe mode



High Power HPRING

Power & compatibility

The HPRING is a solid ring, equipped with 12 high powerful leds. Its large internal diameter make it compatible with the largest camera's objectives. The HPRING reveals all its potential in the field of robotics (for example, to locate the products during the packaging process) and also in the field of quality control.

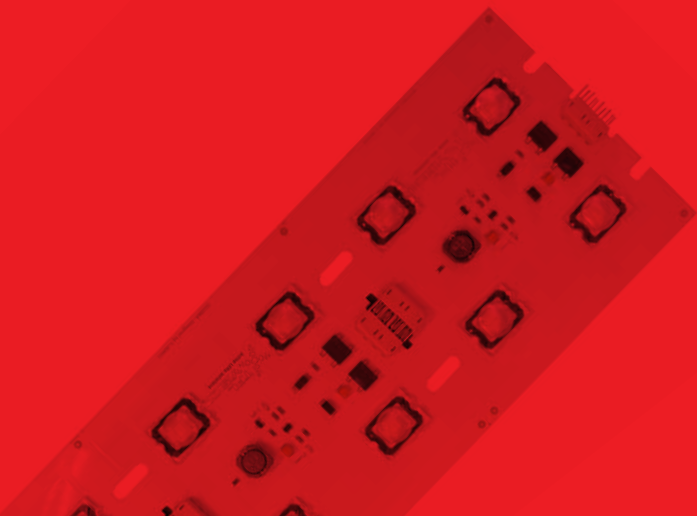
COLOURS:



Find out more

- lenses choice
- diffusers choice

FOCUS :
EXTENDABLE
& CUSTOMIZABLE
POWERFUL
LED BRICK.





Led Brick

Optimal customization

Led Brick is recommended for diffuse light or backlight of any size. Plug bricks together to make the lighting area you need. With Led Brick, you get the advantages of led technology (customization, power, stability, etc.) at affordable price. Using Led Brick configuration for your application, you definitely make a smart investment.

COLOURS:



Find out more

- polarity inversion protection
- easy & safe installation
- 4 high power leds
- affordable solution

BACKLIGHT

BACK OR DIFFUSE



Medium MBACK

up to 100 x 40 cm

The Medium MBACK provides an indirect lighting (backlight), particularly homogeneous and efficient. The Medium MBACK of TPL Vision are tailor-made. So, equipped with thin borders, they perfectly fit all kinds of conveyors. It can also be used in diffuse lighting, to attenuate the reflections of shiny items.

COLOURS:



Large LBACK

up to 100 x 100 cm & 150 x 85 cm

The Large LBACK is a solid tailor-made backlight, that offers a very homogeneous lighting. Among TPL Vision's range, the Large LBACK is the biggest backlight. It can easily illuminate a big surface, even when the camera is settled far away from the conveyor. It can also be used in directive diffuse lighting.

COLOURS:



new version

from 4 to 5 times
more powerful*

Small SBACK II

10 sizes available

The new SMALL SBACK II is a compact backlight, equipped with high powerful leds. Its homogeneity has been increased on the whole surface, including the edges, so as to avoid the appearance of hot spots. Thanks to its thin borders, the SBACK II perfectly fits confined spaces.



COLOURS:



Find out more

- high powerful leds
- perfect homogeneity
- M12 connector

* according to tests on white leds (WHI) & red leds (630).

FOCUS :
PERFECT CONTROL
OF THE LIGHTING,
THE SMALL SDOME II.



new version

from 4 to 5 times
more powerful*



Small SDOME II

Diffuse lighting, \varnothing 80 et \varnothing 130

Equipped with high powerful leds, the new SMALL SDOME II is the most compact TPL Vision dome. The SDOME II offers a diffuse and homogeneous indirect lighting that lessen reflections on shiny surfaces. The SDOME II is equipped with an inventive clipping system on its top, so as to adjust the opening diameter. Doing this, you will restrain the lighting waste.

COLOURS:



Find out more

- high powerful leds
- continuous or strobe mode
- M12 connector

* according to tests on white leds (WHI) & red leds (630).



DOMELIGHT DIFFUSE LIGHTING



Large LDOME

ø 300 mm

The LARGE LDOME is the biggest TPL Vision's dome. It is equipped with high powerful leds, in various colors. Either in continuous or in strobe mode, the LDOME provides a very diffuse indirect lighting, without any light impacts. No doubt that this is the indispensable product for rounded shiny surfaces

COLOURS:



Find out more

- homogeneous diffuse lighting
- aluminum and PMMA solid body
- continuous or strobe mode



Medium Flat MFDOME

up to 100 x 40 cm

The Medium Flat MFDOME is a tailor-made flat dome that can be seriously considered as a real alternative to the dome, when the working space is confined and needs a powerful lighting. Very thin, the MFDOME gets a hole in the middle to insert the camera's lens. It can work in continuous or strobe modes.

COLOURS:



Large Flat LFDOME

up to 100 x 100 cm & 150 x 85 cm

The Large Flat LFDOME has the same general properties as the MFDOME. The LFDOME is tailor-made and assembled with aluminum structures, especially designed for big sizes. Thanks to the LFDOME, you will get a directive very diffuse lighting.

COLOURS:



SPECIALS

TARGETED LIGHTINGS



Square Light

Swivel light

TPL Vision's SQUARE LIGHT is renowned for its modularity : compound of 4 independent swiveling bars, it can be used in directive or darkfield lighting. The SQUARE LIGHT works in RGB, what can be very useful when the pieces to be lighted evolve over time, regarding the shape and the colours.

COLOURS:



Find out more

- RGB
- 4 lightings independantly orientable
- solid aluminum body

new version

from 4 to 5 times
more powerful*



LOW ANGLE II

Darkfield lighting, \varnothing 80 et \varnothing 130

The LOW ANGLE II provides a darkfield lighting, very popular among industrial vision professionals. Equipped with high powerful leds, this new version is up to 5 times more powerful than the previous version. Placed closely to the surface, the LOW ANGLE II provides an homogeneous lighting with a low incidence angle and can detect any kind of reliefs on flat surfaces.

COLOURS:



Find out more

- high powerful leds
- continuous or strobe mode
- M12 connector

* according to tests on white leds (WHI) & red leds (630).



FIXING ADD-ONS

Swivel Mount for bar-format



ADVANTAGES :

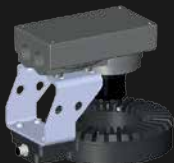
- easy fixing of the **bars**,
- accurate set up of the **angle** of incidence,
- robustness: swivel mount made of **aluminum**.

Coming soon:

LRMOUNT

Special fixing for **HPRING**.

3 versions available, to suit the largest number of cameras.



SRMOUNT

Special fixing for **Thin TRING**.

3 versions available, to suit the largest number of cameras.



VARIOUS ADD-ONS

Filters for cameras



Diffusers for lightings



Polarisers filters & diffusers



Glasses of protection



For an optimum protection
on a large spectrum
(from 350 nm to 1 000 nm).

CURRENT CONTROL

Dedicated power supplies

new versions

coming soon



TPL Vision develops **current control power supplies*** for products without electronics, so as to guarantee their lighting stability and to extend their lifetime.

- » **SWR Power Supply** (continuous & strobe modes),
- » **STR Power Supply** (strobe mode),
- » **ThinLED Power Supply** (for ThinLED, strobe mode).

NEW : equipped with a special casing, the coming versions of these power supplies can be set up without disassembly.

* Non-contractual images.

TPL Vision 3-year warranty

All TPL Vision's products are manufactured from high quality components and with the help of proven assembly techniques. However, in case of a problem on a lighting, TPL Vision has developed a **3-year warranty** program.

Once the default has been validated, TPL Vision commits itself, in the field of this warranty, to repair or replace the defective pieces*.

* submitted to restrictions, mentioned in the General Terms and Conditions.



Resource center

Discover on the **Download** page of our website all the technical documents available for our led lightings:

- *techsheets*,
- *user manuals*,
- *2D & 3D drawings*.

Please connect to :

<http://www.tpl-vision.net/download>



PRODUCTS



Products quality, worldwide products brands probate.



Products documents and pictures library.



Plug&Light Certification & user-friendly products.

COMPETENCE



Qualified workforce, technical team at your disposal.



After-sales department, installation advice.



Technology watch & products equipment with the best components.

SERVICE



Feasibilities & best recommendations.



Many equipments, in-house tests, activity expertise.



Targeted & Marketed Lighting solutions.



www.tpl-vision.net

DEALER