

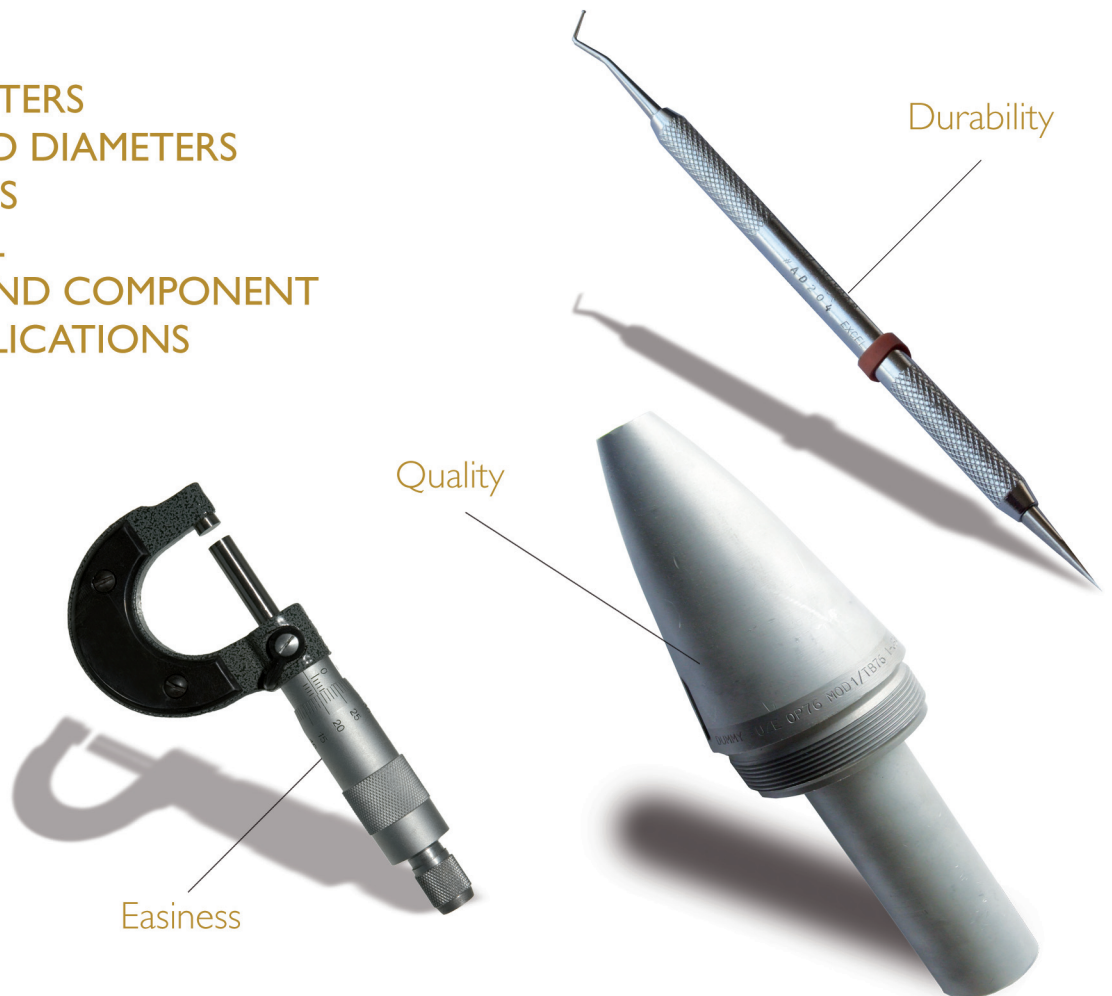


MARKING SYSTEMS



# ROLLER MARKING MACHINES

- SMALL DIAMETERS
- MEDIUM SIZED DIAMETERS
- CONTINUOUS
- HORIZONTAL
- SPECIAL ROUND COMPONENT
- SPECIALS APPLICATIONS
- SUPPORTS
- ACCESSORIES



MACHINE BUILDER FROM 1948

## **AUTOMATOR INTERNATIONAL Marking Systems**

### **IMPACT MARKING**

Impact and roller marking machines available as manual, pneumatic, electro-pneumatic models for permanent marking

### **HOT MARKING**

Hot marking for products such as leather, plastic, paper, wood, cloth, with or without colour

### **MULTI PIN MARKING**

Highly sophisticated and very fast computerised systems

### **SINGLE PIN MARKING**

Versatile and technologically advanced systems for marking text or logos in an arc, angle, or straight line, via a PC

### **READING AND TRACKING**

Reading via a camera and processing of the matrix OCR computerised marking

### **TAG MARKING**

Wide range of manual and computerised systems

### **LASER MARKING**

Laser systems using Nd Yag lamp, Diode or CO<sub>2</sub> source to mark any material and shape

### **ELECTRO-CHEMICAL MARKING**

Etching process for permanent identification of metal surfaces through an engraved stencil

### **HYDRAULIC MARKING**

Hydraulic systems to mark steel chassis, bars, railings, beams

### **SCRIBE MARKING**

Computerised drag marking machines to mark by "scratching" the surface, without causing any deformation or noise

### **SPECIAL APPLICATIONS**

Project and realisation of special systems for marking, identifying, tracking

### **READING AND DECODIFICATION**



Datamatrix code

### **The Automator brochures collection**



# AUTOMATOR<sup>®</sup>

## INTERNATIONAL

presents its extensive range of standard and special machines for marking, stamping, identifying, punching, numbering, lettering etc. ... in other words for leaving an indelible and permanent mark on any surface or product whatsoever. Impeccable quality and the highest technology are the basis for our ability to meet the most demanding and varied requirements of our customers, whatever branch of industry they may come from.

The extensive range which constitutes the AUTOMATOR program provides the highest productivity using the latest production processes.

More than 50 years' experience guarantees that Automator will offer their customers an exclusive service to solve their particular marking problems.

Starting with interchangeable types and hand

stamps, through mechanical and pneumatic machines, and finally reaching the latest, most advanced and innovative computerised systems, Automator always takes a leading role thanks to the very high qualitative and technological standards it sets for itself in the international market place.

Automator is also very well represented in emerging markets overseas and in the far east.

An extremely well trained and conscientious

staff which is focused on

progress and innovation to

obtain the highest precision

and quality for the product and

for customer service is the

corner-stone of Automator's

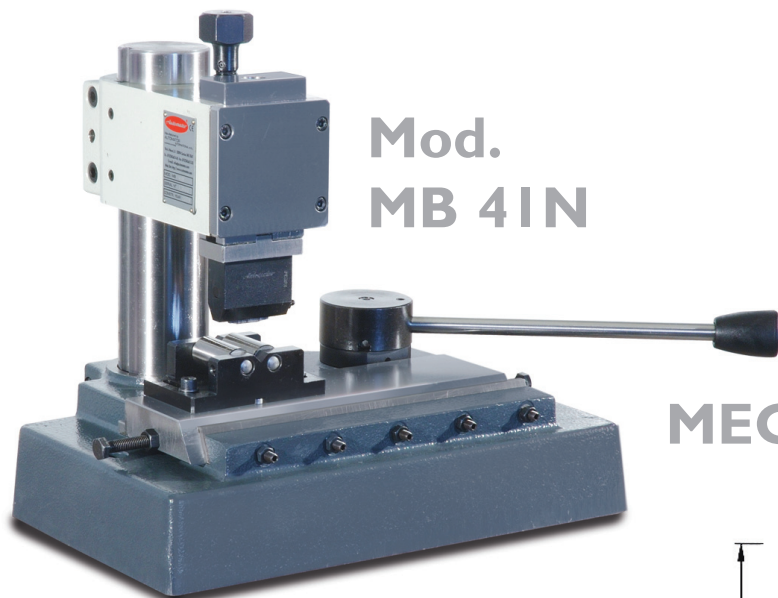
success.

Reliability is for Automator the

trademark which knows no frontiers.



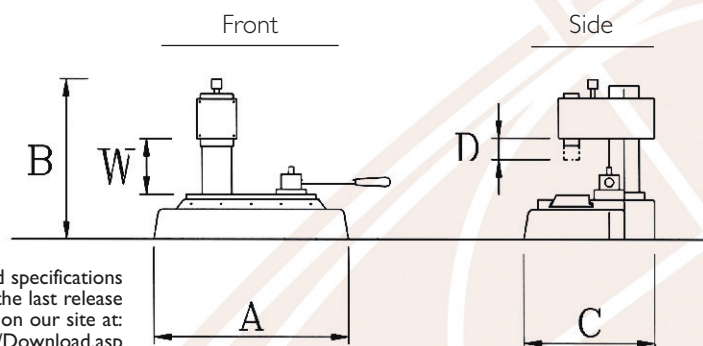
# SMALL DIAMETERS



**Mod.  
MB 4IN**

- The manual roller marking machine for the perfect marking of round components, either solid or hollow from 8-65mm diameter.
- Solid round components are marked using roller support, type S2R. Thin walled hollow parts are marked using mandrel support type SIR.

## MECHANICAL DRAWING



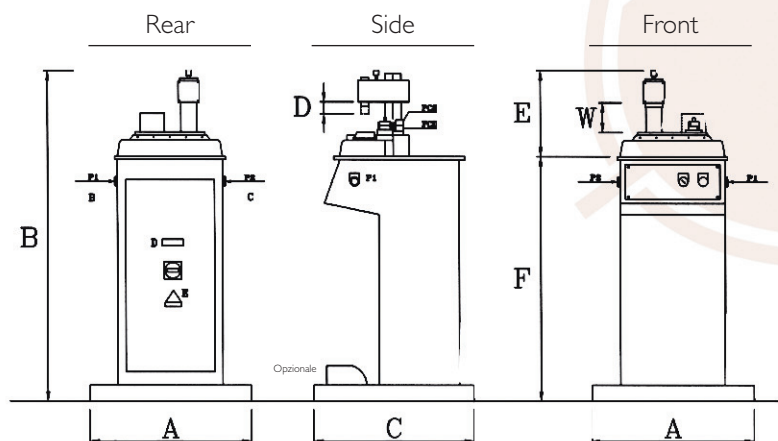
We reserve the right to amend specifications without notice, you can download the last release on our site at:  
<http://www.automator.com/Download.asp>

- Motorized version of the machine MB4IN.
- With geared motor connected to 380V, 3 phase, 50 Hz.
- Mounted on bench, model TP.
- Twin push button safety system is integrated in the bench.
- Suitable for marking round components from 8-65 mm diameter.

**Mod.  
MB 4IE**



## MECHANICAL DRAWING



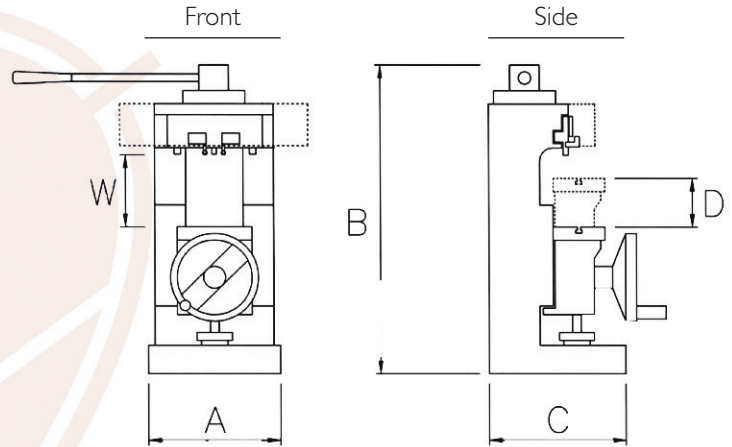
Disegni e specifiche potranno essere variati senza preavviso.



**Mod.  
MB 71N**

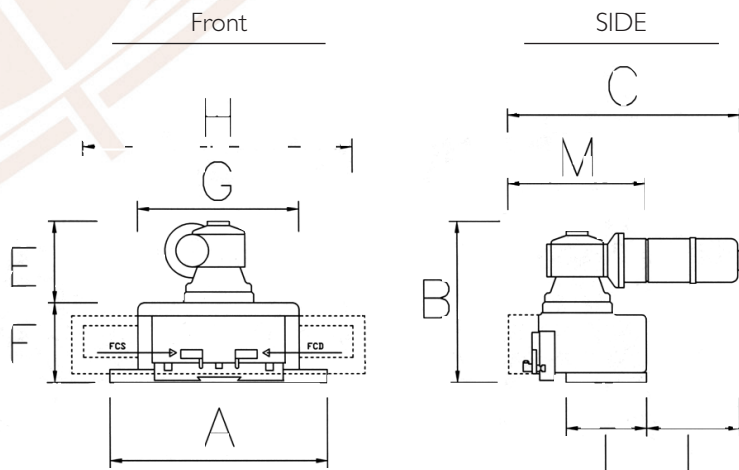
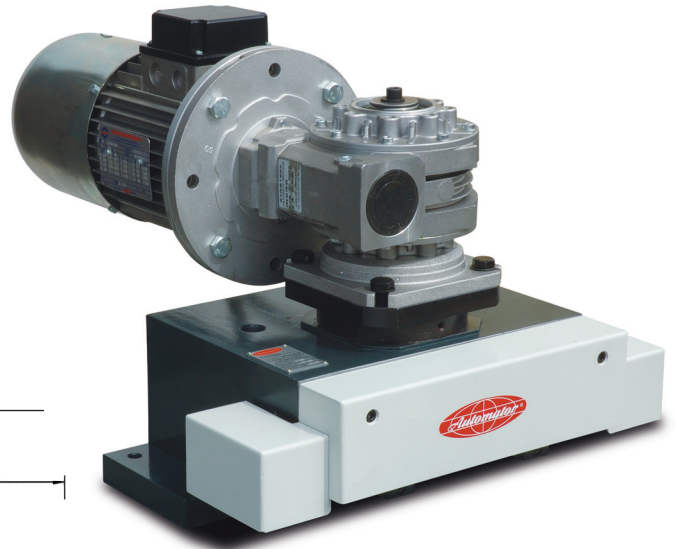
- Manually operated machine for marking, graduating numbering etc. of cylindrical, conical or flat components. Maximum diameter of round components: 110 mm
- Simple setting of depth of mark.
- The table is fitted with spring washers to even out differences in diameter and to achieve consistent depth of mark.
- Large range of accessories available.

## MECHANICAL DRAWING



**Mod.  
MB 71UE**

- Electrical marking unit with slide movement via a geared motor.
- For marking, graduating, numbering of cylindrical, conical and flat components.
- Linear marking takes place by rolling
- Specially designed for integration in production lines.



## MECHANICAL DRAWING

We reserve the right to amend specifications without notice, you can download the last release on our site at: <http://www.automator.com/Download.asp>

# MEDIUM SIZE DIAMETERS

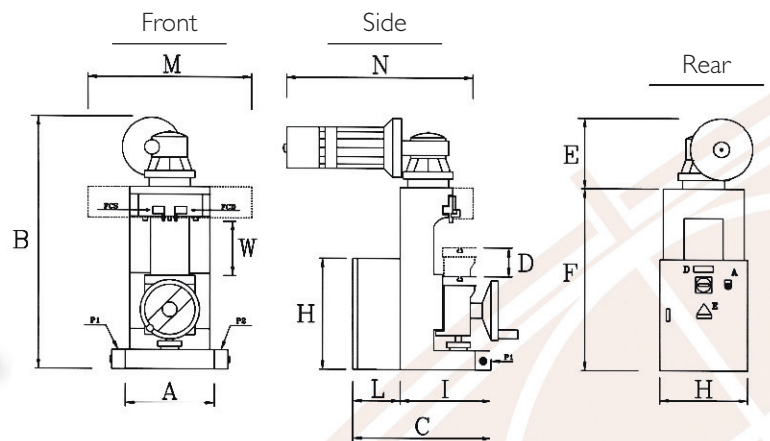
# MEDIUM SIZED DIAMETERS

## Mod. MB 71E

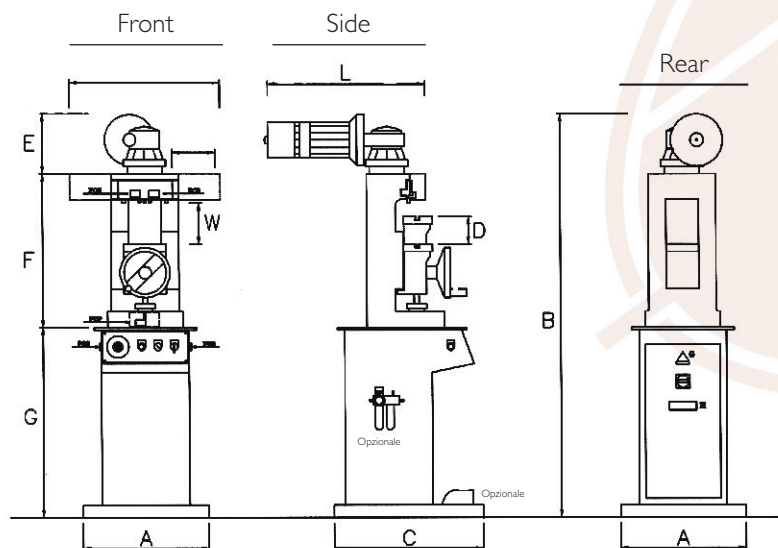
- Electrically operated roller marking machine for marking, graduating, numbering of variously shaped round components up to a maximum of 110 mm diameter.
- Simple setting of the depth of mark.
- The table is fitted with spring washers to even out differences in diameter and to achieve consistent depth of mark.
- Operation is via electrical twin push buttons. All electrical components are built into the bench, type TG.



## MECHANICAL DRAWING



- Electrically operated machine with additional pneumatic movement of the table. This ensures perfect and uniform marking every time.
- PLC control of all movements.



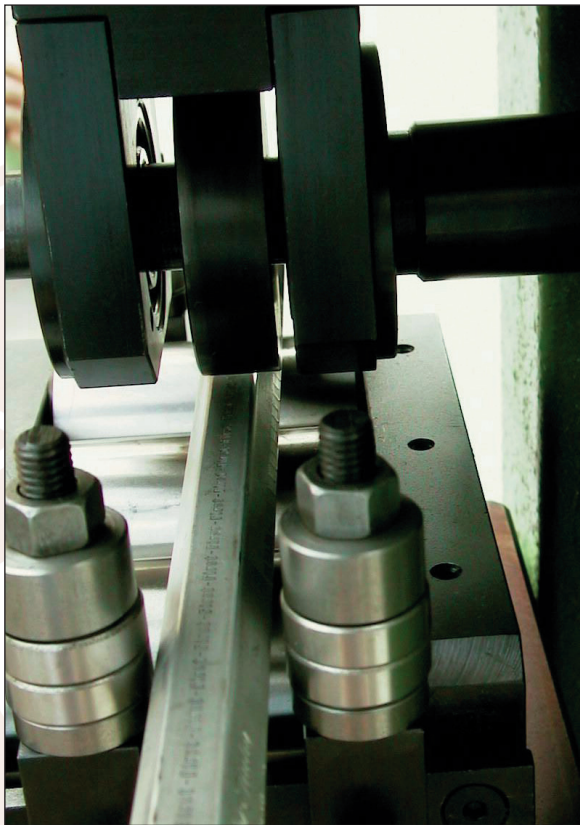
## Mod. MB 71EP



## MECHANICAL DRAWING

# CONTINUOUS ROLLER MARKING

Continuous, repeated marking on bars, hexagonals, tubes and profiled material etc. The symbols, logos or text are rolled into the material using a marking roller of 60 mm diameter. Production rate: 6 metre/min. Output can be doubled by using two rollers simultaneously.

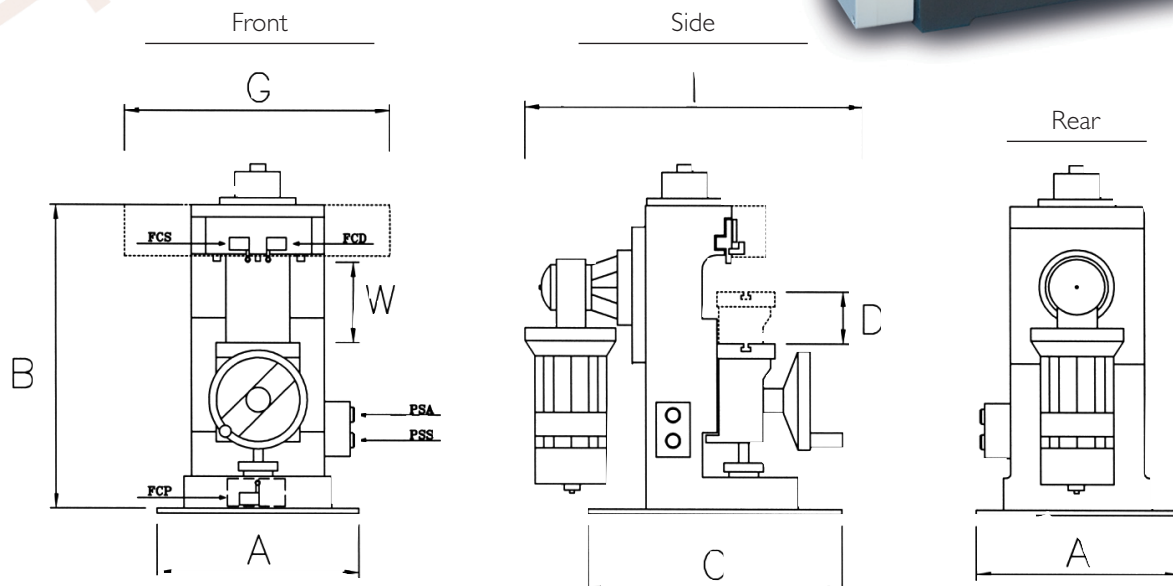


Mod.  
MB 7ICE



We reserve the right to amend specifications without notice, you can download the last release on our site at: <http://www.automator.com/Download.asp>

## MECHANICAL DRAWING



# HORIZONTAL

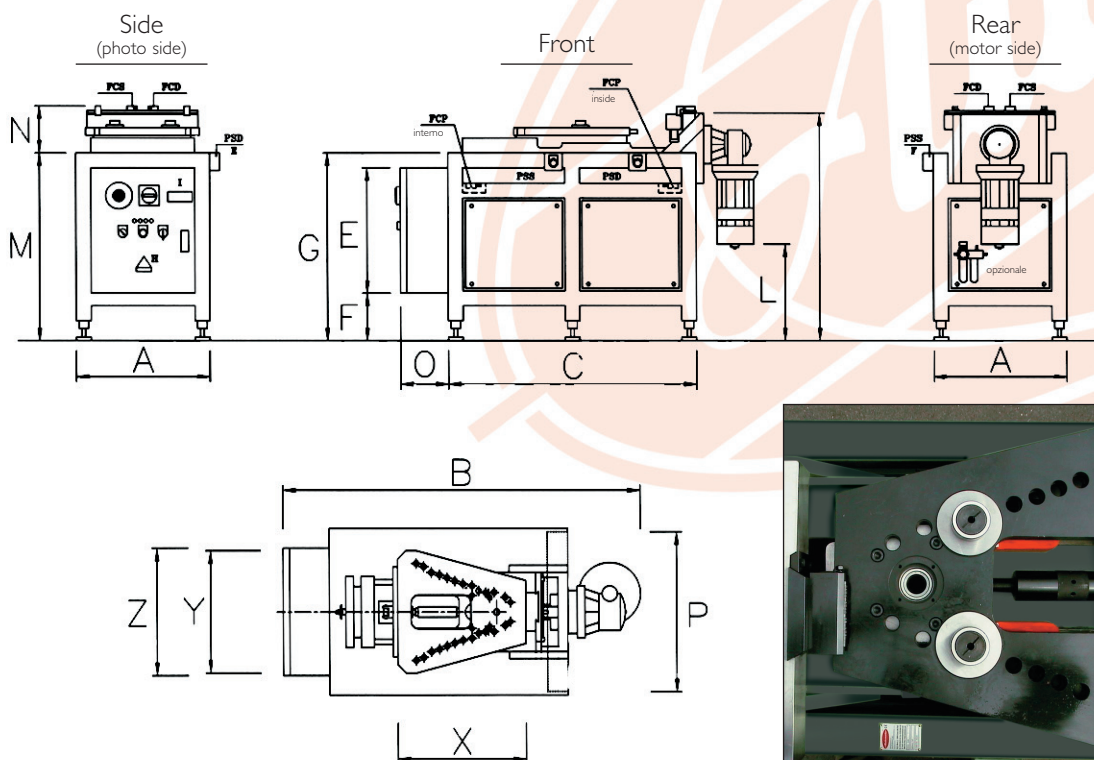
Mod.  
MB 76E 90°

Mod.  
MB 76EP 90°



- These roller marking machines will mark horizontally placed round parts and flanges up to 650 mm diameter.
- The maximum length of text must not exceed 180 mm, but can be one or more lines.
- Deeper marking can be achieved by repeating the same marking cycle several times. The part to be marked is pressed against the typeholder using spring washers with adjustable resistance.
- Loading and unloading are carried out manually.
- The machine is operated using twin push button actuation.
- The pneumatic model (EP) has an approach stroke of 22 mm (to feed forward the part to the marking head).
- **2 versions are available:**  
**E** with the characteristics of the electric model MB 71E  
**EP** with the characteristics of the electropneumatic model MB 71EP

MECHANICAL DRAWING





# SPECIAL ROUND COMPONENTS

Mod. <sup>®</sup>  
MB 76N

Mod.  
MB 76E

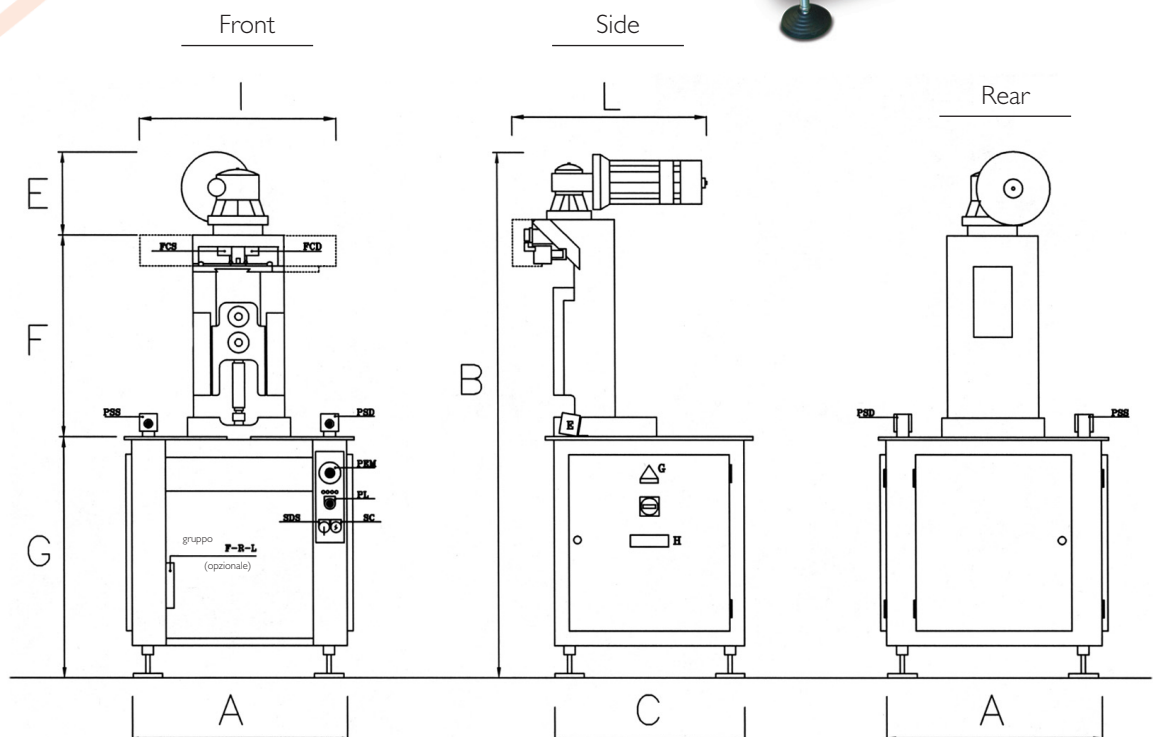
Mod.  
MB 76EP

- With these roller marking machine vertically positioned round components, rings etc up to 1000 mm diameter can be marked with any required text.
  - The pneumatic model (EP) has a vertical movement of 22 mm.
  - The maximum length of text is 180 mm and can be of one or more linea.
  - Deeper marking can be achieved by repeating the same marking cycle several times. The part to be marked is pressed against the typeholder using spring washers.
  - Loading and unloading are carried out manually.
  - The machine is operated using twin push button actuation.
- 3 versions are available:**  
**N:** manual operation  
**E:** electrically driven  
**EP:** electrically driven with pneumatic feed of the part to the marking head



MECHANICAL DRAWING

We reserve the right to amend specifications without notice, you can download the last release on our site at: <http://www.automator.com/Download.asp>



# TECHNICAL SPECIFICATIONS

MODEL	DIMENSIONS													TECHNICAL DATA												
	A	B	C	D	E	F	G	H	I	L	M	N	O	P	X	Y	Z	W	Max dia. (mm)	Net weight (kg)	gap between columns (mm)	moto rating		"T" nuts (mm)	Stroke of slide	Air pressure (bar)
																						(kw)	(V)			
MB 41N	295	300	240	30	-	-	-	-	-	-	-	-	-	-	-	-	-	125	65	35	-	-	-	-	100	-
MB 41E	600	1.090	600	30	300	760	-	-	-	-	-	-	-	-	-	-	-	125	65	110	-	0,18	380	-	100	-
MB 71N	340	830	310	125	-	-	-	-	-	-	-	-	-	-	-	-	-	235	110	126	130	-	-	10	180	-
MB 71E	360	1.020	500	125	230	730	350	450	310	190	480	560	-	-	-	-	-	235	110	138	130	0,55	380	10	180	-
MB 71EP	600	1.730	600	125	230	730	760	-	480	560	-	-	-	-	-	-	-	235	110	230	130	0,55	380	10	180	6-8
MB 71CE	340	830	310	125	-	-	480	-	570	-	-	-	-	-	-	-	-	235	80	155	130	0,55	380	10	-	-
MB 71UE	400	450	560	-	290	160	295	425	130	250	215	-	-	-	-	-	-	-	-	50	-	0,55	380	-	180	-
MB 76E 90°	530	1.170	1.000	-	500	190	750	-	910	380	750	190	190	480	470	350	440	-	600/650	360	-	0,55	380	-	290	-
MB 76EP 90°	530	1.170	1.000	-	500	190	750	-	910	380	750	190	190	480	470	350	440	-	600/650	360	-	0,55	380	-	290	6-8
MB 76E	730	1.785	650	-	280	685	820	-	480	560	-	-	-	-	-	-	-	-	1000	300	130	0,55	380	-	290	-
MB 76EP	730	1.785	650	-	280	685	820	-	480	560	-	-	-	-	-	-	-	-	1000	300	130	0,55	380	-	290	6-8

We reserve the right to amend specifications without notice

# SPECIAL APPLICATIONS



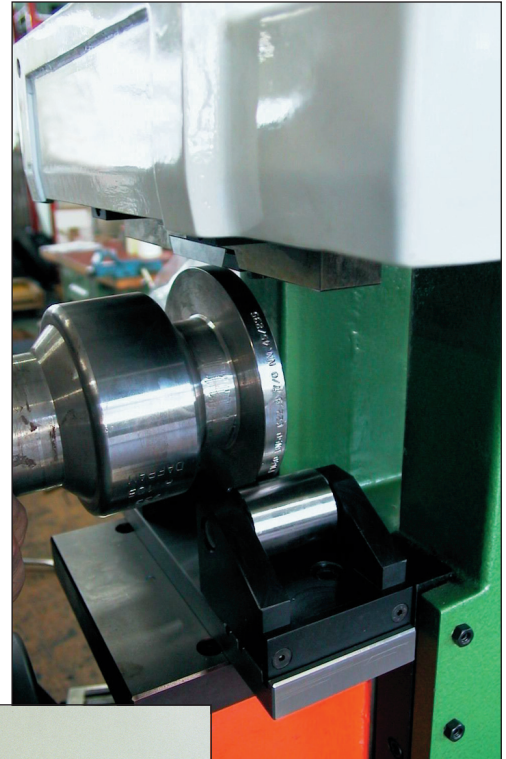
## MARKING OF FIRE EXTINGUISHER BODIES

The sheet metal, after it has been rolled and welded is marked with the following information:

- Supplier's name
- Supplier's code
- Full capacity
- Date of manufacture
- Sequential serial number

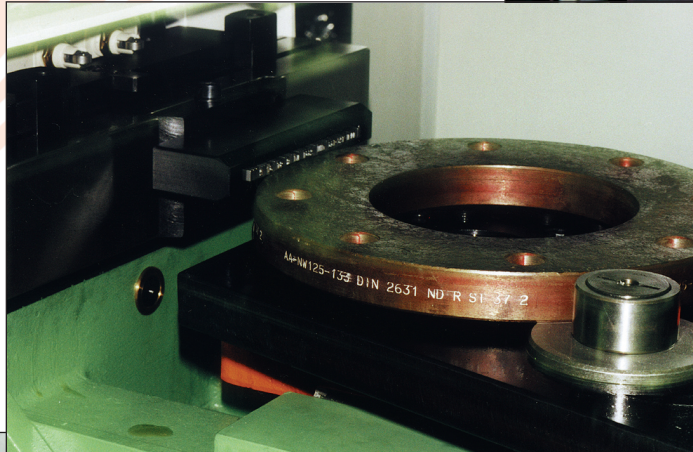
All this information is marked in one operation using a MB76EP fitted with a special numbering head with typeholder attached. Marking time is less than 3 seconds.

*High pressure valve body marked on a MB 71EP*

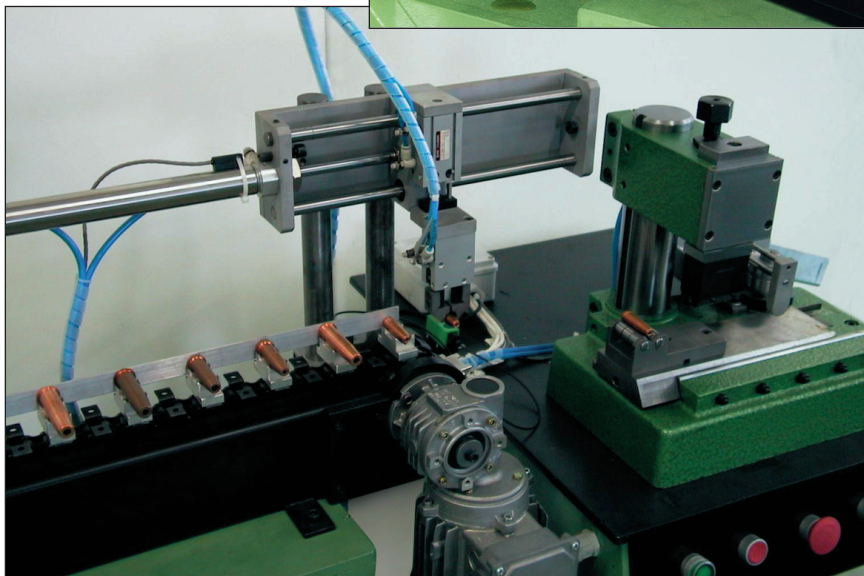


## MARKING OF SAFETY VALVES AND FLANGES

All valves have to be marked with their own specific details: date, pressure, volume, manufacturer etc. Certification regulations require that the valve bodies must be marked with unalterable data.



*Flange marked on a MB 76EP90*



## SPECIAL APPLICATION USING A ROLLER MARKER

Roller marking of motor plugs for diesel motors with automatic loading and unloading. Special tooling with component fixturing.

*Roller marker, MB41E combined with automatic feeding system*

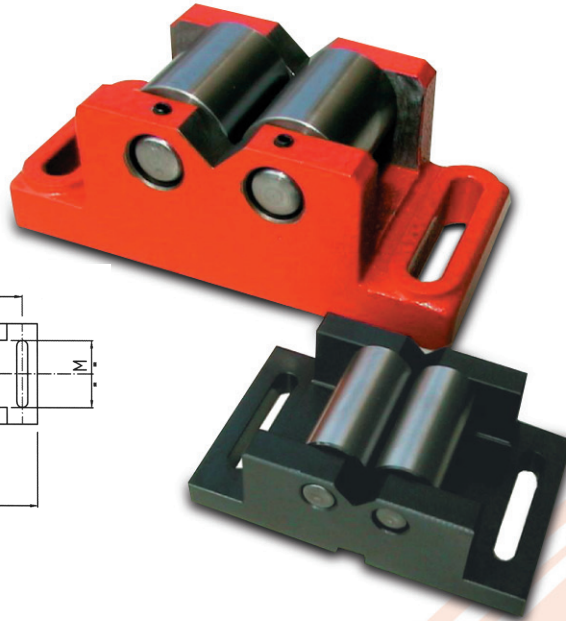
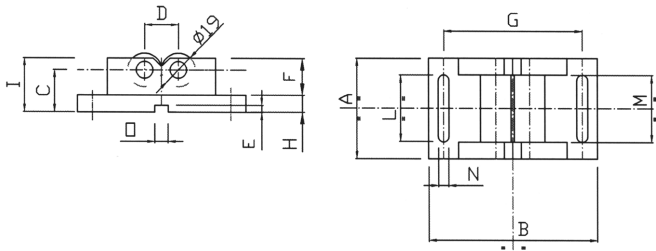
# ROLLER SUPPORTS

We reserve the right to amend specifications without notice, you can download the last release on our site at: <http://www.automator.com/Download.asp>

The supports designed by Automator International are intended to help the operator ensure that the force is always applied equally and that a perfect mark is produced every time. This is due to the accuracy with which every item is designed and tested.

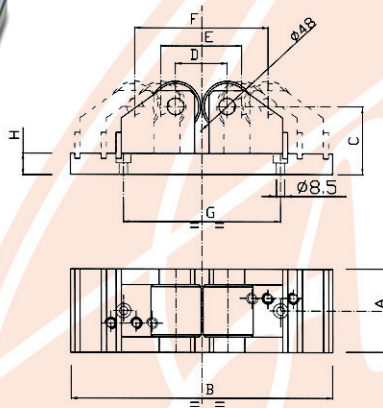
## S2R e S2R Mignon

The twin roller supports S2R and S2R mini are used on roller marking machines to rotate the part to be marked. The marking head causes the part to be rotated during the marking process.

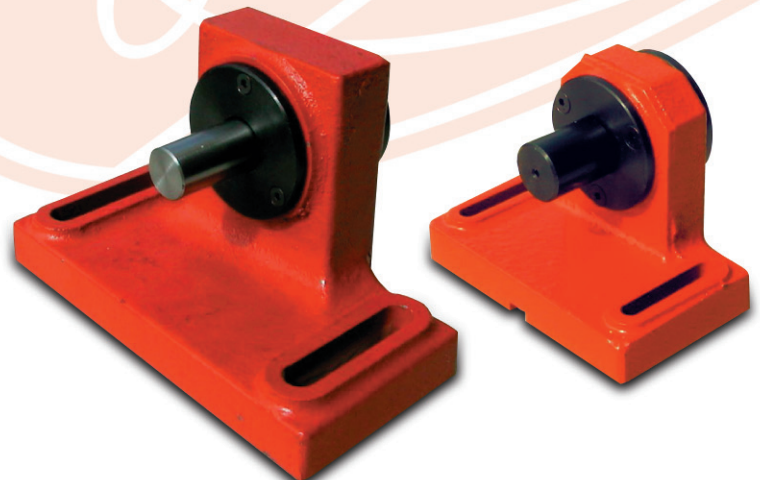


## S2R2 Adjustable

With support S2R2 adjustable, it is possible to set the two rollers to suit the diameter of the parts to be marked.

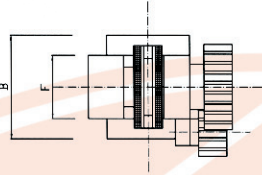
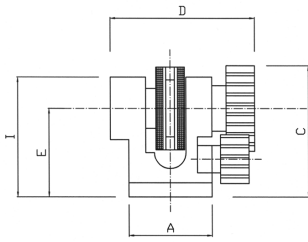
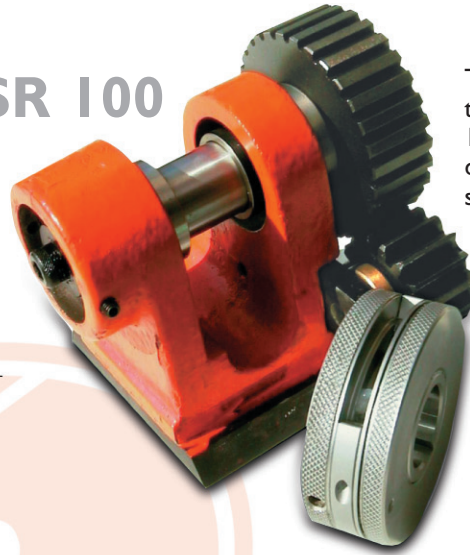


## SIR e SIR Mignon



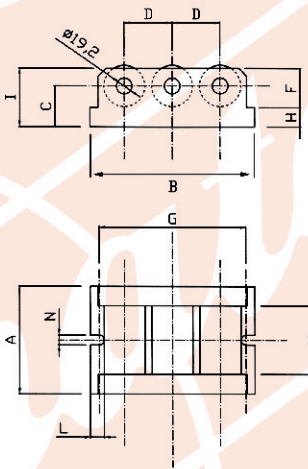
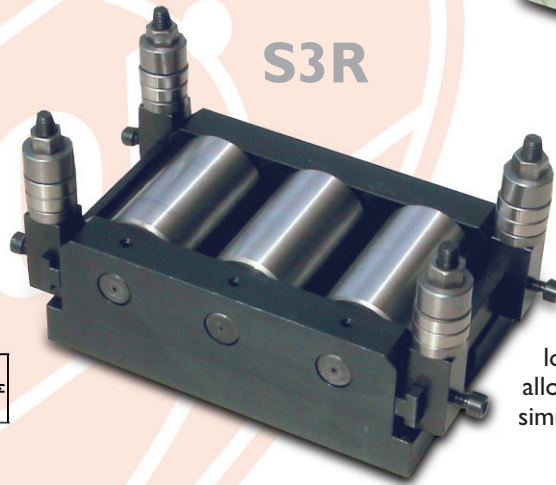
## SR 100

This roller support serves to take the circular typeholder, type RPC 101. It is also possible to fit circular dies of 60mm dia. engraved with special logos or text.



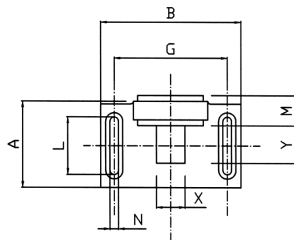
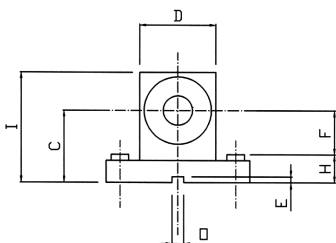
## S3R

This roller support is only used on the roller marking machine, model MB71CE, and guides the bar through the machine for continuous marking. The central lower roller can be engraved to allow marking on two faces simultaneously.



### Technical data:

Type of supports	Machine model	A	B	C	D	E	F	G	H	I	L	M	N	O	X e Y	∅ rollers
SIR	MB 41N - 41E MB 71N - 71E - 71EP MB 71UE	89	175	74	75	/	48	135	26	109	62	52	8	/	On request	/
SIR Mignon	MB 41N - 41E MB 71N - 71E - 71EP MB 71UE	60	98	51	52	4	23	80	18	74	40	30	6	8	On request	/
S2R	MB 41N - 41E MB 71N - 71E - 71EP MB 71UE	80	170	48	42,5	/	44	140	19	64	65	50	13	/	/	39
S2R Mignon	MB 41N - 41E MB 71N - 71E - 71EP MB 71UE	60	100	25	20,2	4	22	80	10	32	40	40	6,5	8	/	19
S2R Adjustable	MB 71N - 71E - 71EP MB 71UE	80	250	65	40	59	119	139	20	/	/	/	/	/	/	48
S3R	MB 71CE	110	170	42	49	/	40	150	20	60	15	70	10	/	/	42
SR100	MB 71N - 71E - 71EP MB 71UE	58	73	92	97	67	43	/	/	83	/	/	/	/	/	/



The manrel supports SIR and SIR mini have been designed specifically for marking thin-walled tubular components.

# ACCESSORIES



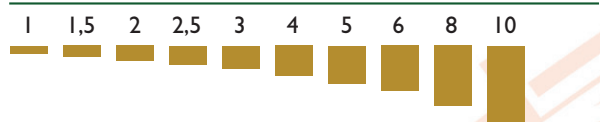
- Types of characters:
- standard sharp face
  - multi-dot
  - rounded
  - flat face
  - hot marking
  - lower case

## FONT SETS

Automator steel types are of exceptional quality, incorporating as they do 50 years' experience. They are made from specially selected steel, which guarantees a long life time. The most modern production methods ensures perfect centering and exact dimensional tolerances. Standard font sets with or without a typeholder contain:

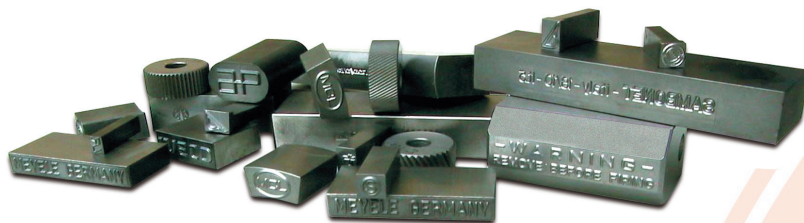
- 100 characters
- 20 blanks
- Tweezers and allen key

Height of standard character sizes

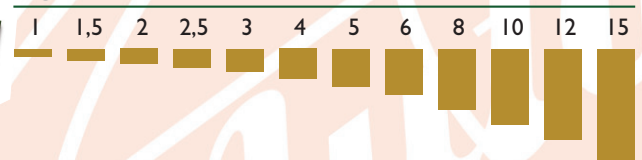


## ENGRAVED STAMPS & DIES

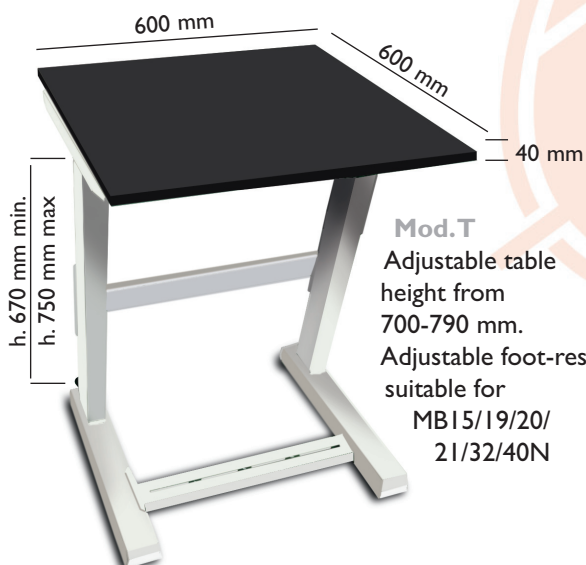
Special dies and punches to any shape with perfect representation of logos or script are made to customers' requirements from special steel. Many years of experience guarantees highest quality and closest tolerances.



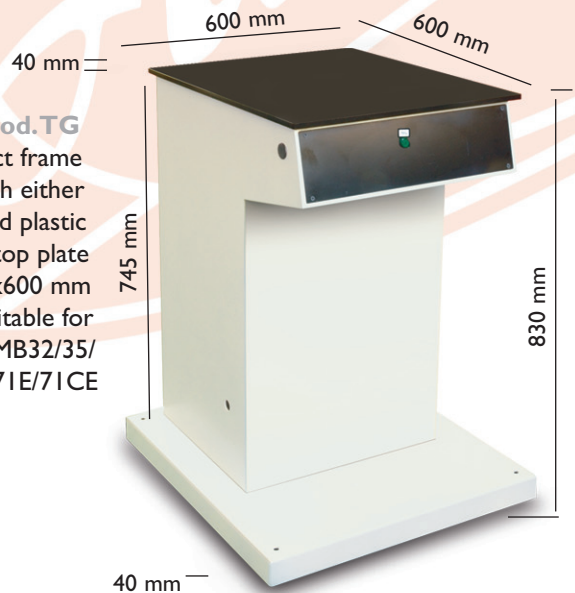
Height of standard character sizes



## TABLES



**Mod.T**  
Adjustable table  
height from  
700-790 mm.  
Adjustable foot-rest  
suitable for  
MB15/19/20/  
21/32/40N



**Mod.TG**  
Compact frame  
with either  
laminated plastic  
or steel top plate  
500x600 mm  
suitable for  
MB32/35/  
71N/71E/71CE

## TYPEHOLDERS

An enormous range of typeholders of both standard and special design is available to resolve any marking application.

The linear 1, 2 and 3 line typeholders as well as the circular typeholders all are provided with a tapped hole at the rear to take the required spigot. Because of this feature Automator typeholders can be mounted on any model of impact press or roller marking machine.



## ADAPTOR PLATES

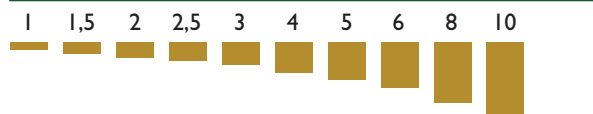
These serve to attach the typeholder to the various roller marking machines.

## NUMBERING HEADS

These are ideal for marking of frequently changing numbers or sequentially incrementing serial numbers; a numbering head can be supplied for every character size and shape of component. Special numbering heads with spacer wheels, slots for holding interchangeable steel types etc. can be supplied on request. Available as two models:

- MB2 automatic
- MB14 manual

Height of standard character sizes



MB 2



MB 14





**WE MARK THE WHOLE WORLD**

**w w w . a u t o m a t o r . c o m**

Send us an e-mail to be putted in contact with our nearest specialist in marking



**MARKING SYSTEMS**

AUTOMATOR INTERNATIONAL s.r.l.  
 Via Meucci, 8 -20094 Corsico (MI) Italy • Tel. + 39-0248601445 r.a. • Fax + 39-0248601503  
 info@automator.com - www.automator.com