



Stieber was founded in Munich in 1937 and is now a medium-sized company at its locations in Heidelberg and Garching near Munich. Stieber, along with North American sister companies Formsprag and Marland, are recognized as world market leaders in the field of overrunning clutches and backstops.

Stieber's exceptional technical engineering capability has led to many industry milestones, including the development and design of the largest backstop in the world.

In North America, Stieber products are available in Warren, MI, USA by Formsprag Clutch, providing complete technical and quotation support.

www.stieberclutch.com

P-1723-15-SC 5/23



CSK

Type CSK is a sprag type freewheel integrated into a 62 series ball bearing (except sizes 8 and 40). It is bearing supported, delivered lifetime grease lubricated.



AS

Type AS is a roller type freewheel non-bearing supported. Bearings are required to support axial and radial loads. Lubrication and sealing must also be provided by the installation. Nominal outside dimensions are the same as series 62.. ball bearings.



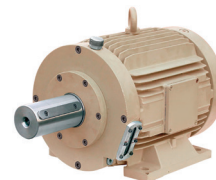
AL / GFR

Types AL / GFR are bearing supported roller type freewheels, using two 160.. series bearings. Different covers and flanges are available to meet various demands.



AL..KMSD2

Type AL..KMSD2 is a roller type freewheel, self-contained, sealed and bearing supported. The KMS type is a rugged coupling, economical and suitable for many applications.



AL..G

Type AL..G is a roller type freewheel bearing supported and self-contained in a cast iron housing. Standard lubrication is oil. This type is designed for dual or standby drives on large equipment requiring high power at high speeds such as industrial fans, pumps and turbines.



RSBW

Type RSBW is a DC sprag type freewheel. It is self-contained, centered by plain bearings for low rotational speeds. The main use is in backstop applications.



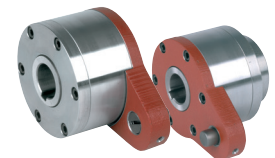
DC

Type DC is a sprag type freewheel cage without inner or outer races. Unit must be installed in a design providing races, bearing support for axial and radial loads, lubrication and sealing.



RSCI

Type RSCI is a centrifugal lift off sprag type freewheel with the inner race rotating. It is a non self supported type used as backstop directly mounted to gearbox housing or motor.



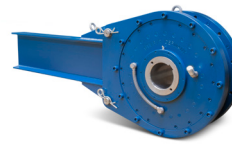
RIZ

Types RIZ..G2G3/G3G4 are centrifugal lift off sprag type freewheels with the inner race rotating. The clutch is self-contained and bearing supported used as backstop in various application.



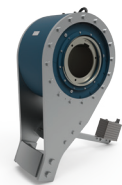
RDBK

Type RDBK is a RSCI centrifugal lift-off sprag-type backstop with an integral torque limiter. The release function allows unlimited backward rotation for maintenance and jam clearing. The RDBK is designed for high speed applications and directly mounted to the gearbox housing.



RDBR-E

Type RDBR-E is a roller-type backstop with a bearing supported multi-disc brake for torque limiting and load sharing functionality. The RDBR-E is designed for low speed applications and directly mounted to the pulley shaft.



Special Design

Stieber realize customer specific products from minor modifications, retrofits to tailor-made solutions in batch size one.